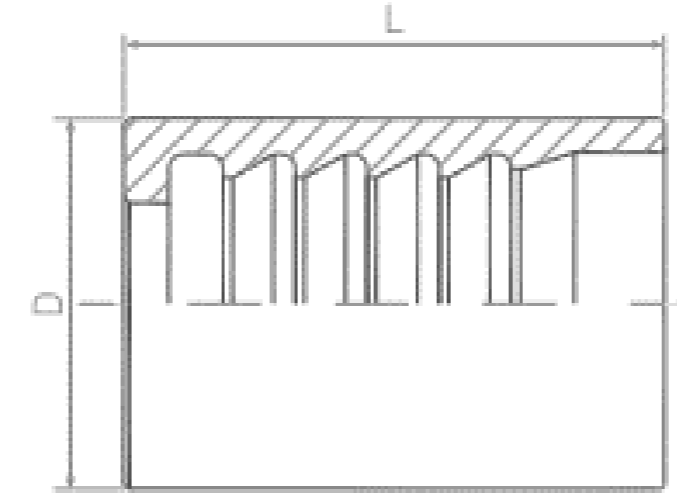


FERRULE



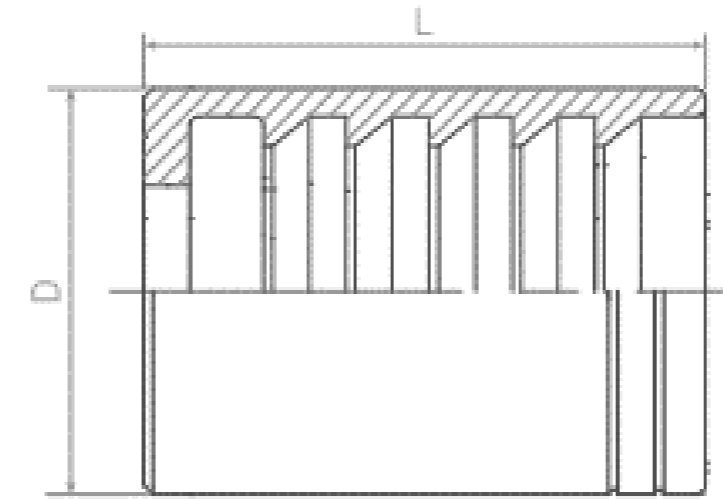
NON SKIVE 1 Wire Braid Ferrule



hose		hose Ø		dimensions (mm)	
inch	mm	inch	L	D	
-3	4,8	3/16"	26.0	19.0	
-4	6,3	1/4"	29.0	19.8	
-5	8,0	5/16"	30.0	22.0	
-6	9,5	1.1/2"	31.6	24.0	
-16	25,4	3/8"	50.0	45.0	
-20	32,0	1"	60.0	53.0	
-24	38,0	1.1/2"	73.0	58.0	
-32	50,8	2"	77.0	73.0	
MATERIAL: Carbon Steel		FINISH: Chromium-(VI) Free plating		VERSIONS: stainless steel AISI 316	

Suitable to be used on medium and high pressure braided hoses:
DIN EN 853 1SN / SAE 100R1AT Hydraulic Hose

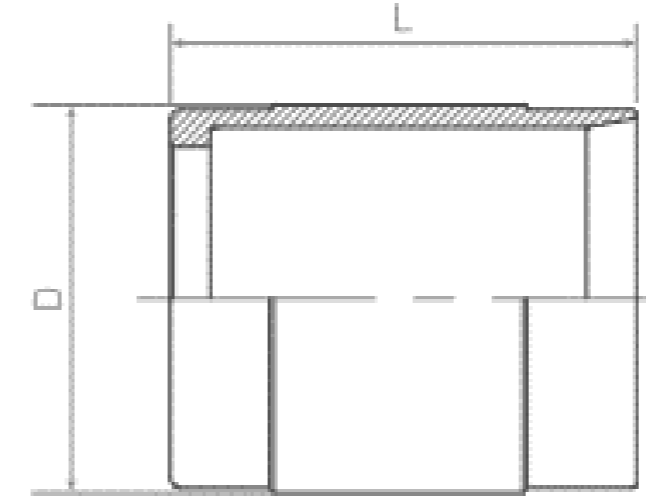
NON SKIVE 2 Wire Braid Ferrule



hose	hose Ø)		dimensions (mm)	
	mm	inch	L	D
-4	6,3	1/4"	30.5	22.0
-5	8,0	5/16"	30.5	21.0
-6	9,5	3/8"	32.0	25.0
-16	25,4	1"	50.0	48.0
-20	32.0	1.1/4"	59.0	56.0
-24	38,0	1.1/2"	70.0	65.0
-32	50.8	2"	77.0	75.3
MATERIAL: Carbon Steel	FINISH: Chromium-(VI) Free plating		VERSIONS: stainless steel AISI 316	

Suitable to be used on medium and high pressure braided hoses:
DIN EN 853 2SN / SAE 100R2AT Hydraulic Hose

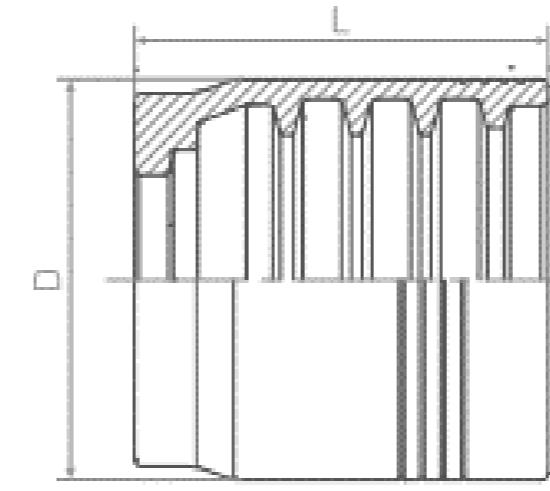
NON SKIVE PTFE Convoluted Ferrule



hose	hose Ø)		dimensions (mm)	
	mm	inch	L	D
-8	12,7	1/2"	32.0	23.5
-12	19,0	3/4"	43.0	32.0
-16	25,4	1"	47.0	38.1
-20	32,0	1-1/4"	59.0	46.0
-24	38,0	1-1/2"	63.0	55.0
-32	50,8	2"	70.0	69.0
MATERIAL: Carbon Steel	FINISH: Chromium-(VI) Free plating		VERSIONS: stainless steel AISI 316	

Suitable to be used on PTFE hoses:
SAE 100R14 SS Braided PTFE Hoses

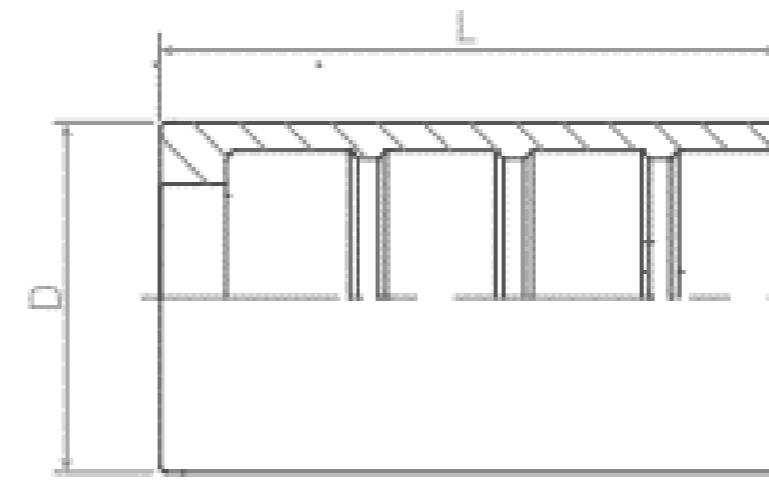
NON SKIVE 4 Spiral Ferrule



hose	hose Ø)		dimensions (mm)	
	mm	inch	L	D
-6	9,5	3/8"	30.0	29.0
-8	12,7	1/2"	33.5	33.0
-10	16,0	5/8"	35.5	37.0
-12	19,0	3/4"	40.0	42.0
-16	25,4	1"	54.0	48.9
-20	32,0	1-1/4"	61.0	61.0
-24	38,0	1-1/2"	71.0	70.0
-32	50,8	2"	88.0	84.8
MATERIAL: Carbon Steel	FINISH: Chromium-(VI) Free plating		VERSIONS: stainless steel AISI 316	

Suitable to be used on high pressure 4 spiral hoses:
DIN EN 856 4SP/4SH High Pressure Hydraulic Hose

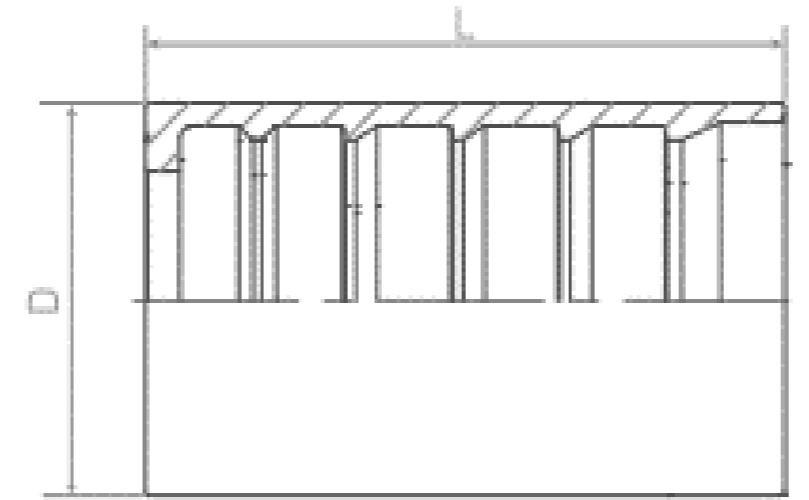
NON SKIVE Textile Braid, Thermoplastic & PTFE Ferrule



hose	hose Ø)		dimensions (mm)	
	mm	inch	L	D
-2	3,2	1/8"	24.1	13.0
-3	4,8	3/16"	25.0	15.0
-4	6,3	1/4"	29.2	17.0
-5	8,0	5/16"	31.0	18.0
-6	9,5	3/8"	31.0	21.0
-8	12,7	1/2"	34.0	25.0
-10	16,0	5/8"	37.0	29.0
-12	19,0	3/4"	43.0	32.0
-16	25,4	1"	50.5	40.0
MATERIAL: Carbon Steel	FINISH: Chromium-(VI) Free plating		VERSIONS: stainless steel AISI 316	

Suitable to be used on high pressure 4 spiral hoses:
SAE 100R7 Hydraulic Hose

DOUBLE SKIVE 4 & 6 Spiral Ferrule



hose	hose Ø)		dimensions (mm)	
	mm	inch	L	D
-12	19,1	3/4"	60.0	38.0
-16	25,4	1"	74.5	46.0
-20	31,8	1.1/4"	88.0	60.0
-24	38,1	1.1/2"	94.0	67.0
-32	50,8	2"	99.0	84.4
MATERIAL: Carbon Steel	FINISH: Chromium-(VI) Free plating		VERSIONS: stainless steel AISI 316	

Suitable to be used on high pressure 4 & 6 spiral hoses:
DIN EN 856 4SH and SAE 100R13 and SAE 100R15 High Pressure Hydraulic Hoses